



BARTHOLOMEW ROAD | | KENTISH TOWN | NW5 2AH

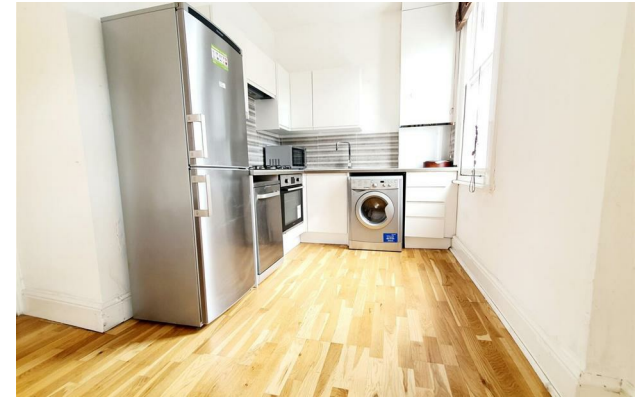
£585 PER WEEK

LIVINGSPLACE  
ESTATE AGENTS

BARTHOLOMEW ROAD |  
 KENTISH TOWN | NW5 2AH  
 £585 PER WEEK

WE ARE PLEASED TO OFFER THIS STUNNING 2 BEDROOM 1ST FLOOR VICTORIAN CONVERSION, WHICH IS SITUATED IN A FANTASTIC LOCATION IN KENTISH TOWN AND IS JUST MOMENTS FROM ALL TRANSPORT LINKS AND IS WITHIN WALKING DISTANCE TO CAMDEN. THE PROPERTY IS OFFERED EITHER FURNISHED OR UNFURNISHED, WITH WOODEN FLOORS, HIGH CEILINGS, A QUALITY FITTED KITCHEN AND A MODERN BATHROOM. AVAILABLE 18TH JUNE 2025

- CONVERSION
- 1 BATHROOM
- GAS CENTRAL HEATING
- 1 RECEPTION
- FURNISHED OR UNFURNISHED



Energy Efficiency Rating		
	Current	Potential
<i>Very energy efficient - lower running costs</i>		
(92 plus) <b>A</b>		
(81-91) <b>B</b>		
(69-80) <b>C</b>		
(55-68) <b>D</b>		
(39-54) <b>E</b>		
(21-38) <b>F</b>		
(1-20) <b>G</b>		
<i>Not energy efficient - higher running costs</i>		
<b>England &amp; Wales</b>	EU Directive 2002/91/EC	

COUNCIL TAX BAND **D**  
 EPC RATING

105 ST PAULS ROAD  
 ISLINGTON  
 LONDON  
 N1 2NA  
 020 7354 0505  
 INFO@LSEA.CO.UK